

AVEX® BLIND RIVETS

What Makes Avex® Different...And Better?

The Avex® rivet adds important... and exclusive...features to those offered by ordinary blind rivets. The unique advantages designed into the Avex® rivet allow for its use:

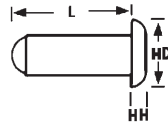


In wide-tolerance holes. Since the rivet can expand up to its own head diameter, accurate hole sizing or alignment is not necessary.

To pull sheets together. The extraordinary rivet tail expansion automatically effects superior clamp-up action on the parts being assembled.

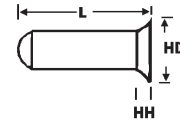
Over a vast range of thicknesses. The "dubble-bubble" expansion feature offers the capability to fasten securely in both thick and thin grip ranges with a single length rivet.

While providing a sealed stem. The rivet material flows both behind and in front of the mandrel insuring a positively retained and sealed stem.



Dome Head

Aluminum Rivets
Steel Mandrels
(Zinc & Yellow)



120° Countersunk

Auveco Part No.				Head (Flange) Style	Rivet Dia.	Grip	Length L	Flange Dia. HD	Flange Height HH	Hole Size
Unit Package										
50	100	500	1000							
.....	10336	10337	Countersunk	1/8"	To 1/4"	15/32"	.205"	.030"	.136"
.....	10348	10349	10350	Dome	1/8"	To 5/16"	1/2"	.215"	.044"	.136"
.....	10351	10352	Dome	5/32"	To 1/4"	15/32"	.255"	.057"	.166"
.....	10354	10355	10356	Dome	3/16"	To 1/4"	17/32"	.349"	.070"	.199"
.....	10357	10358	10359	Dome	3/16"	To 7/16"	23/32"	.349"	.070"	.199"
.....	10345	10346	Countersunk	3/16"	To 1/2"	25/32"	.339"	.050"	.199"
17654	17655	Dome	1/4"	To 11/32"	21/32"	.500"	.094"	.268"

Avex® Brazier Head Rivets



Auveco Part No.	Rivet Dia.	Grip Range	Rivet Body Length	Head Dia.	Unit Pkg.
Aluminum Rivet -Steel Mandrel (Zinc)					
17432	3/16"	1/16"-1/4"	1/2"	15/32"	50
17433	3/16"	3/16"-7/16"	11/16"	15/32"	50

Large Head 3/16" Plywood Rivets



Non-Structural -Break Mandrel Rivets
Aluminum Rivet, Steel Mandrel (Plated)

Auveco Part No.	Grip	Hd. Dia.	Head Thick.	Hole Size & Drill	Unit Pkg.
13805	3/8"-1/2"	5/8"	3/32"	.192 To .196"	50
13807	7/8"-1"	5/8"	3/32"	#11	50

Stavex® Large Flange Rivets



- Large flange head enables soft, pliable materials to be fastened
- All steel construction (zinc plated) provides high shear and tensile values.
- Typical applications:
 - Plastic energy absorber strip to automotive bumper
 - Plywood liners to both sidewalls and roofs in truck bodies and trailers

Auveco Part No.	Dia.	Grip	Flange Dia.	Hole Size	Unit Pkg.
16988	3/16"	3/16"-1/4"	5/8"	.192-.196"	25
16989	3/16"	1/4"-3/8"	5/8"	.192-.196"	25
16990	3/16"	3/8"-1/2"	5/8"	.192-.196"	25