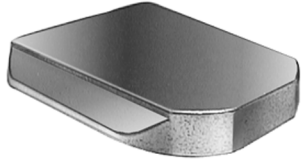


Sec. 17

GLASS SHOP SUPPLIES



19393
(F1TZ-17698A)
Rear View Mirror Bracket
(Windshield Mounted)
NAGS number DW 1256, 1099
1169 & 1170
Fits Ford Mirrors
F0TZ-17700-A
& F7AZ-17700-A on
Ford & L-M Continental,
Contour, Escort, Mustang, Mystique,
Sable, Taurus & Tracer
1991-On
UNIT PACKAGE: 10



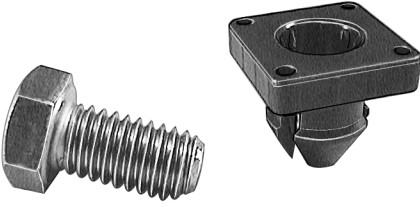
19394
(20626174)
Rear View Mirror Bracket
(Windshield Mounted)
NAGS number 1168, 1191, 1192,
1193, 1194, 1195, 1265,
1288 & 1299
GM
1987-On
UNIT PACKAGE: 10



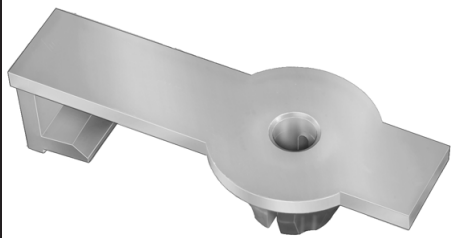
19498
Black Nylon
Rear View Mirror Adapter Bracket
This adapter bracket allows you to
reuse the original mirror when a
windshield is replaced. If the new
windshield comes with a steel
mirror button attached, this adapter
fits over the button. Then the
original mirror can be fitted
onto the bracket.
GM & Chrysler
1981-On
UNIT PACKAGE: 3



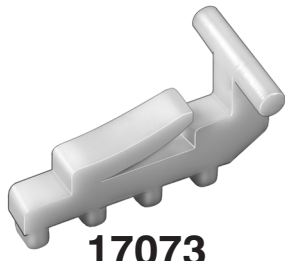
19280
Black Nylon
Door Window Glass
To Regulator Nut
Ford Contour & Mystique
1995-On
UNIT PACKAGE: 5



19281
(F5RZ-5421416B)
Door Window Glass
To Regulator Fastener
Assembly
3/8"-16 x 3/4" Grade 8 Cap Screw
Ford Contour & Mystique
1995-On
UNIT PACKAGE: 2 Sets



20309
(5008055AA)
Natural Nylon
Window To Regulator Grommet
Screw Size: #14 (M6.3)
Overall Length: 57mm
Stem Length: 10mm
Fits Into 13mm Hole
Dodge Neon
2000 - On
UNIT PACKAGE: 15



17073
(20085729)
Nylon
Window Regulator Drive Block
Used With Window
Regulator Tape
GM 1980-On
UNIT PACKAGE: 25



Piano Wire
For Cutting Through Sealant
On Windshields Without Gaskets
Solid Not Braided Wire
16959
1/4 Pound (approx. 160 Ft.)
.025" Wire Diameter
UNIT PACKAGE: 1 Roll